

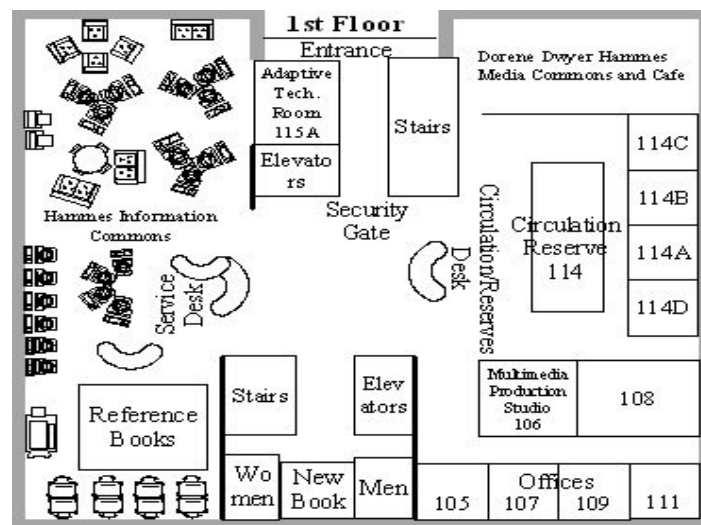


## Guide to Periodicals

**Periodicals are publications that are issued in regular parts** (daily, weekly, monthly, quarterly, etc.) over an indefinite period of time. The Schurz Library subscribes to over 25,000 periodicals in either print or electronic format, from popular news magazines like *Time* and *Newsweek* to scholarly journals in the various academic disciplines and the professions (business, education, history, law, nursing, philosophy, sociology, etc.).

**Many indexes and periodical databases that allow users to find specific magazine or journal articles by subject are available on the library's Reference and Research page ([www.iusb.edu/~libref](http://www.iusb.edu/~libref)).** EBSCO's *Academic Search Premier* database, for example, is available via the web to anyone with an IUSB username and password. *Academic Search Elite* provides abstracts and indexing for over 8,000 magazines and scholarly journals covering a broad range of subjects and areas: current events, the social sciences, humanities, education and more. It also provides full text for over 1,700 journals. Other databases covering specific subject areas are also available: for example, the Sociological Abstracts database indexes professional sociology journals; *CINAHL* (Cumulative Index to Nursing and Allied Health Literature) does the same thing for the nursing field.

**Periodical databases allow the user to search many years of periodical references and enter two or more subject terms in a single search.** Some of them, like *Academic Search*, provide the full text of articles from select magazines or journals. These databases do have their limitations, however. Searches for articles older than 10 or 20 years might have to be done in printed (paper copy) indexes, as the computer databases may not cover older material. Also, the most comprehensive index in a subject area may be available only at the library in hard copy.



**Ask a reference librarian for help in selecting the best index(es) or database (es) for your needs.**

Computers with Internet connections for accessing periodical databases are available in Hammes Information Commons. Users may also connect from campus offices, computer labs and from home with an IU South Bend username and password. Periodical indexes in hard copy are also available in the Hammes

(See reverse side for information on locating specific periodical articles.)

## Locating Periodicals in the Library

An increasing number of databases on the web offer the full text of articles from magazines, journals and newspapers. However, even with the huge growth of electronic periodicals, some articles may be available only in paper format.

The library's print periodicals are shelved by call number on the second floor (except for newspapers which are arranged alphabetically by title). The IU-link button in many of our databases will link you to our holdings information for both print and electronic access to a journal, or refer you to Interlibrary Loan if we don't own it. If the database you're using doesn't provide you with that information, you will need to consult the library's *Periodicals Holdings List* on the web at <http://lt5xg8qf8p.search.serialssolutions.com> to find out if the library has a particular periodical, and if so, to determine the call number to locate it on the second floor if it's in print, or the database in which it's available if in electronic format.

INDIANA UNIVERSITY SOUTH BEND

### Franklin D. Schurz Library Journal Holding List

Search:  GO!

0-9 A B C D E F G H I J K L M N O P Q R S T U V W X Y Z

Title begins with  Search

-- Please select a subject category --  Search

2569 records retrieved for the search: A-Z List \*C"

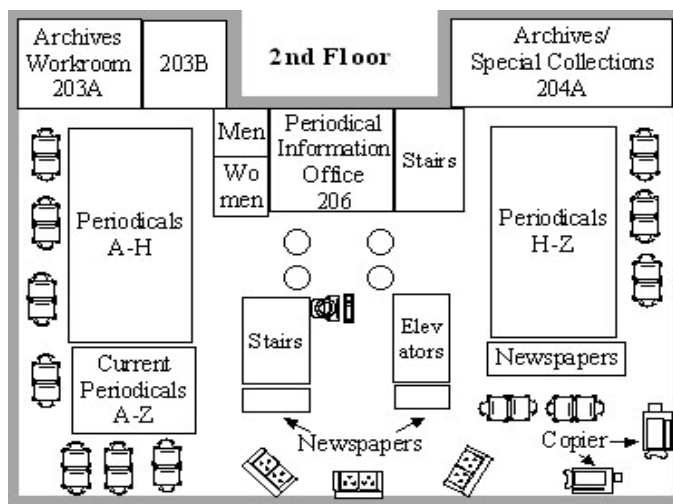
Skip navigation links  
Search results 1 - 100 of 2569  
C & - Cal Cal - Can Can - Can Can - Car Car - CBS CD - CHA Cha - Che Che - Chi Chi - Chr Chr - Cle Next (101-200)

C & D debris recycling (1078-3474)  
from 01/01/1997 to 07/01/1998 in Business Source Premier

C magazine (1992) (1193-8625)  
from 03/01/1987 to present in LexisNexis Academic (selected full-text only)

C41 news (1071-1317)  
from 02/01/1998 to present in LexisNexis Academic

## Periodical Holdings List



Current newspapers are shelved alphabetically by title in the south end of the second floor (lower middle and lower right corner of map). Back issues for some newspapers are on microfilm (located in the ground floor microforms room).

*If you have a disability and need assistance, special arrangements can be made to accommodate most needs. Please contact Julie Elliott at 520-4410 for assistance.*